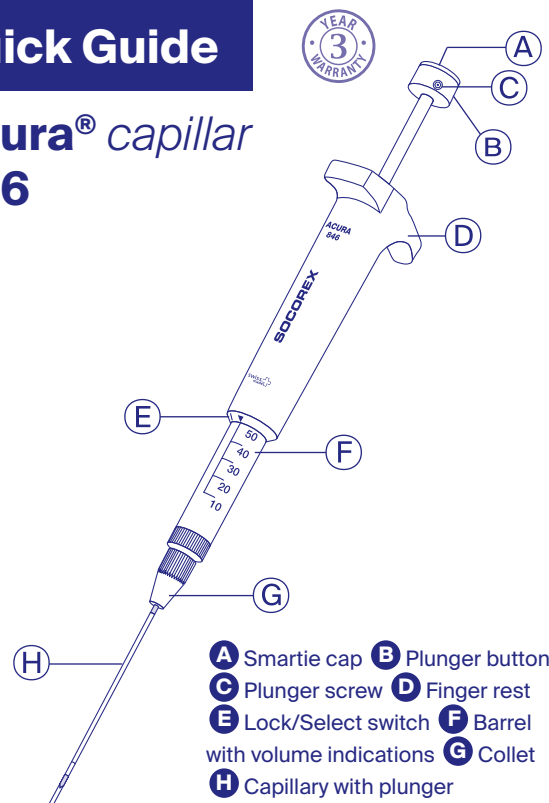


# Quick Guide

## Acura® capillar 846



| Related items   | Volume range (colour) | Packaging | Cat. No. |
|---|-----------------------|-----------|----------|
| Spare glass capillaries                                     | 1 – 5 µL (White)      | 200 / pk  | 341.005  |
|   | 5 – 25 µL (2 x White) | 200 / pk  | 341.025  |
|   | 10 – 50 µL (Green)    | 200 / pk  | 341.050  |
|   | 60 – 100 µL (Blue)    | 200 / pk  | 341.100  |
|   | 100 – 200 µL (Red)    | 100 / pk  | 341.200  |
| Spare stainless steel ETFE tipped plungers with capillaries | 1 – 5 µL (White)      | 5 / pk    | 342.005  |
|   | 5 – 25 µL (2 x White) | 5 / pk    | 342.025  |
|   | 10 – 50 µL (Green)    | 5 / pk    | 342.050  |
|   | 60 – 100 µL (Blue)    | 5 / pk    | 342.100  |
|   | 100 – 200 µL (Red)    | 5 / pk    | 342.200  |
| Work station for 3 pipettes Acura® capillar 846             |                       | 1 / pk    | 320.340  |



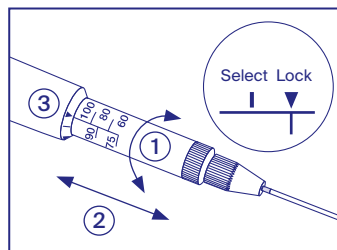
### Package contents

Positive displacement pipette, one spare plunger, samples of glass capillaries, QC certificate, Quick Guide.

### ⚠ Safety precautions

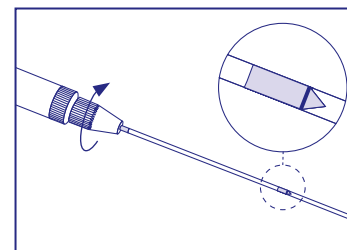
- Read carefully and observe manufacturer's instructions and guidelines.
- Refer to and follow regulations about handling of potentially hazardous reagents.
- Before use, check instrument for good working conditions.
- Do not use harsh chemicals (such as acetone) to clean instrument.
- Mind possible hand fatigue during serial pipetting and its medical consequences (such as repetitive strain injuries, RSI).
- Intended for laboratory use only.

### Step-by-step instructions



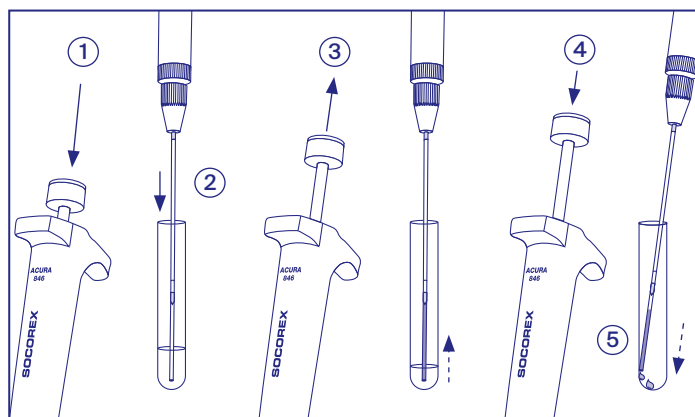
#### Volume setting

- 1) Unlock barrel by twisting.
- 2) Place selected graduation mark.
- 3) Lock into position.



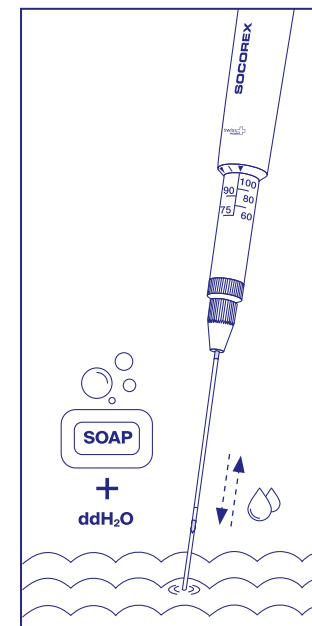
#### Capillary fitting

Loosen collet (G). Set pipette at max volume and insert capillary with colour mark first. Align flat end of plunger with black line. Re-tighten collet.



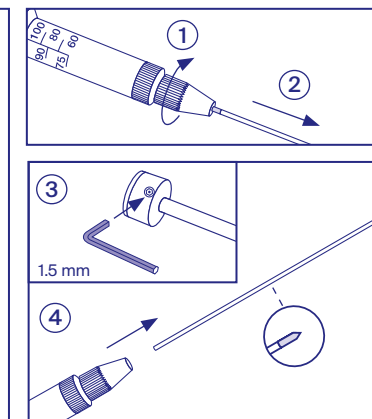
#### Dispensing

- 1) Depress plunger fully.
- 2) Immerse capillary into solution.
- 3) Release plunger slowly to aspirate.
- 4) Smoothly depress plunger.
- 5) Holding capillary against wall of receiving vessel to dispense.



#### End of work

Discard capillary or rinse in distilled water or saline solution by operating plunger a few times.



#### Plunger replacement

- 1) Loosen collet.
  - 2) Remove glass capillary.
  - 3) Loosen screw with allen key.
  - 4) Remove used plunger.
  - 5) Turn pipette upside down and insert plunger until resistance.
- Repeat steps 3 to 1 to complete replacement. Control proper position of capillary.

### Most common troubleshooting

| Observation                              | Possible cause                    | Solution   |
|--|-----------------------------------|--|
| Capillaries not fitting the pipette      | Improperly attached capillary     | Re-insert capillary  |
|  | Inadequate capillaries            | Use original Socorex capillaries; make sure colour of plunger button and plunger rod match |
| Plunger sticking or dragging             | Dirty or used plunger             | Disassemble and clean plunger or replace with a new one                                    |
| Pipetted volume differs from desired one | Capillary not properly positioned | Follow steps as described in <i>Capillary fitting</i> section                              |

### Scan to access operating instructions



EN / DE / FR

1.846.E-B1025